

WEEKLY

# NEWSLETTER

Friday 17th May 2024



KIND

RESILIENT

READY

ACTIVE

ASPIRE

## Message from Miss Taunt

### Dear Families

Thank you to all the parents who attended our Behaviour Policy Workshop on Wednesday. We really appreciated your input and support. We were looking at 3 main elements of the policy: our Belmore Rules; the things school does to encourage and motivate children to do the right thing; and the approaches school use when children aren't doing the right thing. After May half term we will be trialling and sharing parts of the new policy. Do let us know if you have any feedback or ideas. It has been great having staff, children and families all having an input.

The new Belmore Rules we will be trialling are on page 2 and link directly to our school values. There are designed so that children are really clear about how they behave in school.

We are aware that some children are watching Roasts on YouTube and Netflix. This is comedy where people insult each other often using racist and offensive language. This is not appropriate for primary age children and we are seeing lots of children trying to 'roast' each other. Racist and offensive language and swearing is not acceptable at Belmore and we appreciate your support in talking to your children about not 'roasting' each other.

Please do contact the school if you are worried about this at all.

Have a lovely weekend.

**Rose Taunt**  
Head of School

### Key Dates this Half Term

Week Beginning Monday 20th May	Walk to School Week
Monday 20th May	<b>Year 1</b> Kew Gardens Trip
Monday 20th May 3.20pm KS2 Hall	Meeting about the <b>Year 6</b> Residential trip
Tuesday 21st May	TFL Awards Trip for selected pupils
Tuesday 21st May	<b>Reception</b> "Think Green, Go Green" Day
Wednesday 22nd May	<b>Inclusion</b> trip to the park
Wednesday 22nd May	The Big Book Give Away—Part 2 Main Playground
Thursday 23rd May 8.25 9am	<b>Walk to School Week Scavenger Hunt</b> <b>Family Coffee Morning</b> Conservatory
Thursday 23rd May 3.30-4.30	<b>Nursery Open Afternoon</b> - we have spaces for September. Come and see what we do!
Friday 24th May 9am	Assembly: <b>Year 4 and Reception</b> families welcome to join.
Friday 24th May	<b>Yr 6</b> Hyde Park trip
Week beginning Monday 27th May	<b>Half Term</b>

# OUR BELMORE RULES

*We ASPIRE to be  
the best we can be*

These are our new Belmore Rules written by staff, children and parents. We will be trialling them until the Summer

We are proud to be part of the Belmore community where we have high expectations to represent the school positively.

We have a positive mind-set and even when we are faced with challenges we -



Recognise that everyone is different and we value and encourage them



Use kind words and actions. No swearing, racist, abusive or inappropriate language. No hurting others, fighting or play fighting



Are polite and use good manners



Listen and follow school adults instructions wherever we are



Make sure we are where we are supposed to be, ready to learn



Move around school calmly and safely



Look after our school, classrooms and playgrounds, and everything in them



Speak up when something isn't right



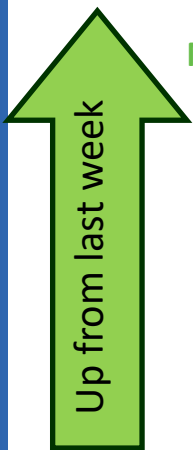
We are honest, take responsibility for our actions and choices and understand that they have consequences

# ATTENDANCE UPDATE

Attend today, Achieve tomorrow  
Every day counts!

We will be ACTIVE  
in mind and body

If your child is unable to attend school for any reason it is important that you phone the school **before 8am** on the first day of absence and leave a message on the absence line **by calling 01895 462364 and choose option 1.**



Number of children who had 100% attendance this week:

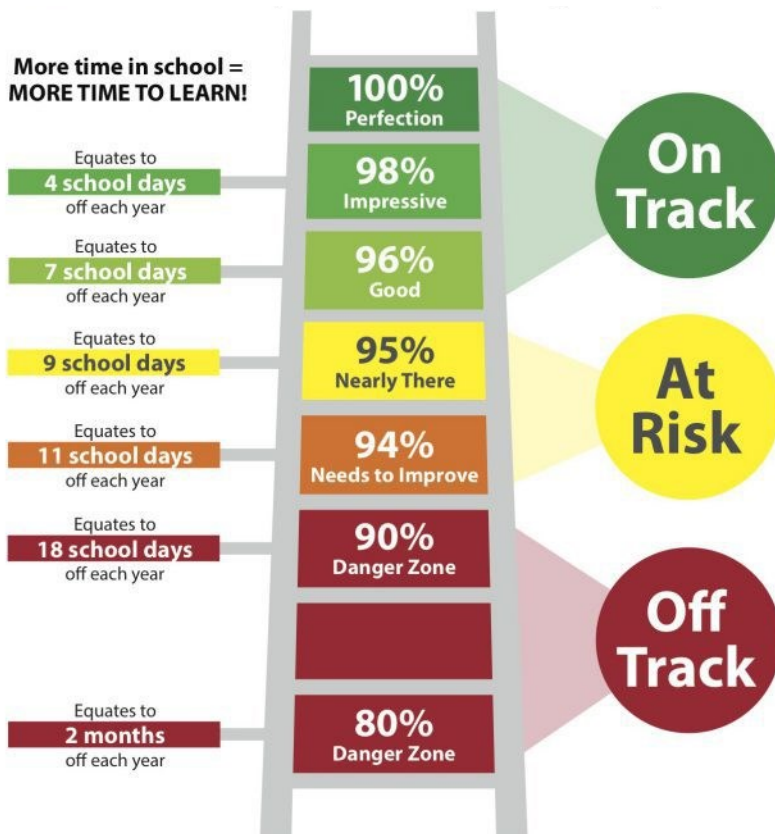
438

Well done to those families!

## Attendance WC 13/05/24

Class	Attendance
Pine	79%
Oak	87%
Elm	91%
Daisy	91%
Poppy	93%
Sunflower	91%
Bumblebee	97%
Butterfly	96%
Ladybird	95%
Hedgehog	84%
Rabbit	94%
Squirrel	88%
Daley	94%
Farah	95%
Kenny	99%
Ahlberg	94%
Blackman	98%
Gavin	89%
Aderin	95%
Franklin	97%
Hawking	97%
Anderson	99%
Attenborough	98%
Berners-Lee	99%

More time in school =  
MORE TIME TO LEARN!



For every day your child is absent from school,  
**over 6 hours** of instructional time is lost.

This week's whole  
school attendance

93.9%

Our target is more than 95%

# THIS WEEK'S AWARDS

*Celebrating success*

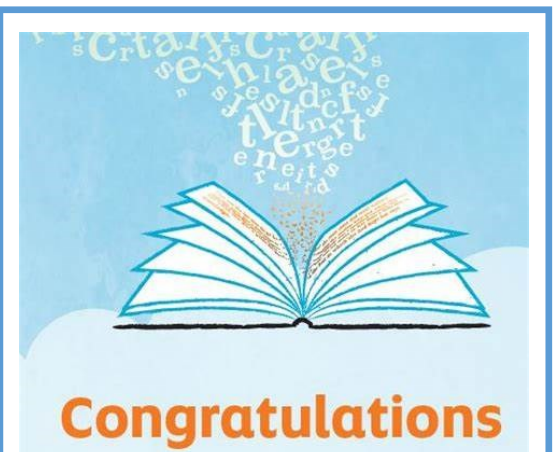
*We ASPIRE to be  
the best we can be*

## Our super stars of this week



Class name	Star Pupil
Poppy	Levi
Daisy	Bukunmi
Sunflower	Liliana
Bumblebee	Leo
Butterfly	Sham
Ladybird	Emma
Hedgehog	Riley
Rabbit	Zemar
Squirrel	Phoebe
Daley	Jeevna
Farah	Ethan
Kenny	
Gavin	Amari
Ahlberg	Flavia
Blackman	Laura
Aderin	Nancy
Franklin	Nikola
Hawking	Robinvir
Anderson	Anderson class
Attenborough	Attenborough class
Berners-Lee	Berners Lee class

## Our Readers of the week are:



Laura                      Stanley  
Nickash                  Benyamin  
Sara                        Hana  
Zoya                        Jaswini  
Anaya                      Sian  
Rafael  
Ali  
Adam  
Jaiden

## House Points

<b>St George</b>	<b>926</b>	<b>St Andrew</b>	<b>839</b>
<b>St Patrick</b>	<b>878</b>	<b>St David</b>	<b>903</b>

# WALK TO SCHOOL WEEK

We will be ACTIVE  
in mind and body



## Park & Stride

Park your car 10 minutes away from school and complete the journey on foot



## Poster Competition

Children will be designing a poster to encourage families to walk to school. The winning entries in KS1 and 2 will be made into banners to go outside our school.



## Scavenger Hunt

On Thursday we will open the large K2 gate at 8.25 - Come and try our scavenger hunt and increase your daily steps with a few laps of the playground or the field and see what you can find!

We won't do this if it's raining!

Families will need to stay with their children until 8.35 for normal drop off



## Coffee Morning

Come and talk to our SLT and have a cuppa

The Stronger Families and Brilliant Families Teams from Hillingdon will be on hand to talk about the support

We will also have our Pre-loved uniform recycling scheme. Pick up some new Belmore uniform for free.



## Big Book Give-away

On Wednesday 22nd May, the Belmore Reading Ambassadors and Mrs Rae will be holding **another** Big Book Giveaway. Thank you to all of the families who came along this Wednesday, we hope you enjoy your books at home!

**We will be set up in the main playground in the same location from 3.15pm.**

Please come along and take home some books. We ask that families take a maximum of three books so that there are enough to go around.

**See you there!**



## Photo Permission Form

Please make sure you tell us if you do or don't want us to use your child's photo in school, in our newsletter and on our new Facebook and Instagram pages coming soon.

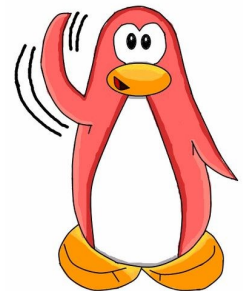
[CLICK HERE](#) to fill out the form



## Hellos and Goodbyes

We are sad to be saying goodbye to Ms Clapham who works in inclusion and Gavin Class teacher, Mrs Lall who are leaving next Friday. Thank you for all you've done at Belmore.

And a big welcome to our new Admin Assistant on the Front Desk—Lenusha Ananthakumar and Sam Maudsley who is joining us permanently as the new Gavin class teacher.



# READING MATTERS

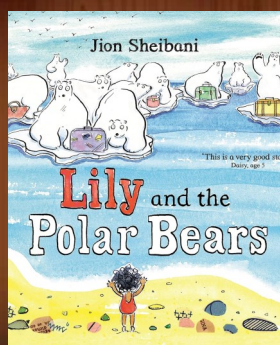
Books build a stairway to your imagination

We are RESILIENT and learn from our mistakes

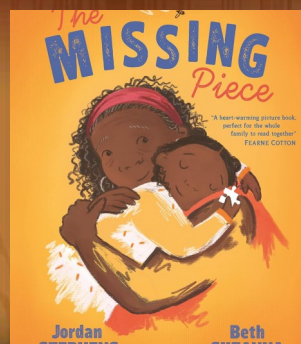
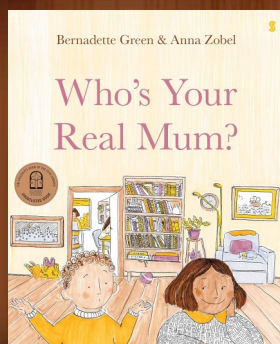
May 15th 2024 is International Day of Families—a United Nations day of global recognition to promote awareness of issues relating to families. The theme of 2024 is Family and Climate Change. The day aims to raise awareness of how climate change impacts families and the role families can play in climate action. The books recommended below have family and/or climate change as the central theme...enjoy!

## May's recommended reads

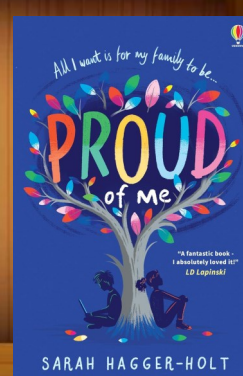
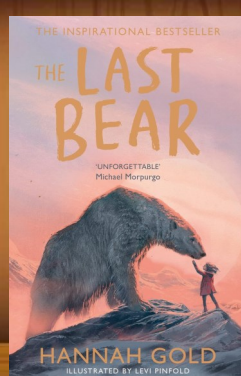
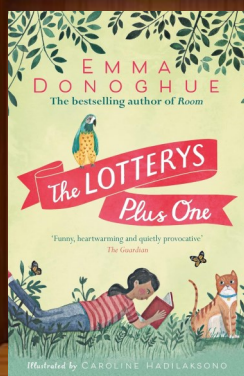
EYFS



KS1



KS2



# SUPPORT OUR SCHOOL

We are **KIND, RESPECTFUL**  
and **WORK TOGETHER**

We have a new Amazon wish list as a way for you to help us by buying resources. Simply click and buy from the list and they will be sent directly to school. Please make sure you put your name when buying for us so we can be sure to thank you.



## Local Businesses are supporting Belmore

Thank you to [The Flower Lady](http://www.theflowerlady.co.uk) on Yeading Lane for your generous purchases from our Amazon Wish List



We have a new recycling bin by the front gate. Please bag up your unwanted clothes and put them in the bin to raise money for the school.

Reception and Nursery need your old household items. Zoom in to see what we need...



### REAL EQUIPMENT, REAL EXPERIENCES

We would like our children to engage in real world scenarios through play with real objects. To make this happen, we need your help.

PLEASE CAN YOU BRING IN AT LEAST ONE ITEM FROM ANY OF THE BELOW TO THE DONATION BOXES OUTSIDE SCHOOL

Please ensure these are clean (including washing any fabric/clothes donations), free from residue, and that no glass, crockery or sharp items are shared.

<b>WOODEN RESOURCES</b> <ul style="list-style-type: none"> <li>• Cable reels</li> <li>• Logs and wooden slices</li> <li>• Coffee tables</li> <li>• Wooden shoe racks</li> <li>• Wooden toys</li> <li>• Wooden offcuts/bark chips</li> </ul>	<b>SAFE DIY ITEMS/ MECHANICAL PARTS</b> <ul style="list-style-type: none"> <li>• Nuts and bolts*</li> <li>• Tools</li> <li>• Pliers</li> <li>• Car parts</li> </ul>	<b>OLD BROKEN ELECTRONICS</b> <ul style="list-style-type: none"> <li>• Old mobile phones</li> <li>• Old radios</li> <li>• Kitchen or weighing scales</li> <li>• House phones</li> <li>• Old lamps</li> </ul>	<b>CONTAINERS</b> <ul style="list-style-type: none"> <li>• Wicker Baskets</li> <li>• Wooden basket</li> <li>• Large tupperware boxes</li> <li>• Galvanized containers</li> </ul>
<b>KITCHEN AND HOUSEHOLD ITEMS</b> <ul style="list-style-type: none"> <li>• Spoons and utensils (nothing sharp please)</li> <li>• Pots and pans</li> <li>• Baking trays</li> <li>• Sieves</li> <li>• Metal bowls</li> <li>• Cutlery racks</li> <li>• Curtain rings</li> <li>• Lanterns</li> <li>• Photo frames</li> <li>• Old curtains</li> </ul>	<b>CRAFT MATERIALS</b> <ul style="list-style-type: none"> <li>• Ribbons</li> <li>• Wool/ yarn/ twine/ string/ rope</li> <li>• Buttons*</li> <li>• Fabric scraps or clothes that can be cut up</li> </ul>	<b>CLOTHES</b> <ul style="list-style-type: none"> <li>• Hats</li> <li>• Scarfs</li> <li>• Jewellery</li> <li>• Fancy dresses</li> <li>• Dress-up clothes</li> <li>• Colourful/unusual clothes</li> <li>• Traditional clothes</li> </ul>	<b>GARDENING EQUIPMENT</b> <ul style="list-style-type: none"> <li>• Pots (clay, plastic)</li> <li>• Tools</li> <li>• Gutterings</li> <li>• Bricks</li> <li>• Watering cans</li> <li>• Roof tiles</li> </ul>

\*Please note that any small parts (buttons, nuts and bolts, etc.) are only useful if there are lots of them donated in a container - no singles please!

### WIN AN AMAZON GIFT CARD!

At the end of the term, we will draw names from a hat containing the names of all children who donated. Winners will receive a Amazon gift card!





# ADVANCE NOTICE

*We are RESILIENT and  
learn from our mistakes*



With Year 6 in their last term at Belmore - here are some key dates to put in your diary

**17th July - 10am and 4.30pm**

Yr 6 Production

**18th July**

Y6 Leavers Disco/Prom

**19th July- 9:30**

Leavers Assembly



Please note some minor time changes

We will be holding Sports Days in our Belmore sports Week:  
24th-29th June

Families will be invited in to our sports days as follow

**Thursday 27th June**

Morning - Years 4&6

Afternoon - Years 3 & 5

**Friday 28th June**

Morning - Years 1 & 2

Afternoon - Reception

**Friday 5th July**

Nursery



Our PTA are putting on an amazing Belmore Family Fun Day on Friday 12th July. 1.30-4.30pm.